

EAST GIPPSLAND FAMILY HISTORY GROUP INC.

P.O. Box 1104

21 Morgan St

Bairnsdale

Vic. 3875

(03) 5152 5590

egfhg@egfhg.org.au

www.egfhg.org.au

BULLETIN

Meetings are held at 2.00 p.m. on the second Saturday in the month

JANUARY 2016

Dear Members,

We are back!

It has been a very busy Christmas period for a large group of our fantastic volunteers. We have raised in excess of three thousand dollars from the four Bunning's sausage sizzles we were allocated in December/January. Thank you all for giving up your time and helping make the group stronger.

The new year sees us with many little jobs to complete. The Their Duty Done web site is steadily being updated. The EGFHG web site is waiting to be updated. Several of our computers are waiting to be updated. And I am waiting to be updated, but fear the hardware is so last generation that modern software would fail to install!

The group is getting to be progressively more optimistic about getting on the Register of Cultural Organisations and the subsequent benefit of having Deductible Gift Recipient status. We should know by April!

Bad luck to all of us who paid for information from Find My Past 1939 Register as they will be making it part of the normal subscription as from 16 Feb! EGFHG maintains its subscription to FMP so feel free to come to the rooms and do your research.

Members who use the Genealogy program FTM will know that they are going through changes that may impact on the program in the future. For an updated report on the changes please read on to see a letter from Peter Robinson that may explain a few of the changes and help you make any decisions on changing your program in the future. FTM group meetings will be held in February to further discuss these issues.

Hi Tony

The attached will be printed in the next edition of Vicgum News. I have permission from John Donaldson to reprint it for the benefit of all our members who use FTM.

Because not all of our users came to our local user group meetings and not all of our members with FTM subscribe to Vicgum I wonder if this could be issued as a general member update mailout.

Cheers Peter

More Information on Family Tree Maker Desktop Software

Right on the closing day of the January newsletter, Ancestry.com announced their intentions to 'retire' *Family Tree Maker* on 31 December 2015. The announcement was covered in a hastily written editorial in the January newsletter. Ancestry received over 10,000 comments (just about all negative) and they posted a second announcement on 9 December 2015. The blog is reproduced as follows:

Posted by Kendall Hulet on 9 December 2015

Following the last [Family Tree Maker desktop software announcement](#), we've seen your outpouring of comments, questions and the concerns you have raised. I've read through many of your comments personally, and I want you to know that we truly value you as customers and your feedback.

Here are three key things I'd like to re-assure you of after reading through your comments:

1. We are fully committed to supporting Family Tree Maker through **at least the end of 2016** with all available support from member services, including technical issues, product issues, updates and attention to the product. **You will be able to use the software, exactly as you do now, including TreeSync, for at least the next year.**
2. We are exploring possible relationships with other desktop software solutions that would make it possible for their products to integrate with Ancestry.
3. We are exploring options to bring more reports and related functionality from Family Tree Maker into the online service. Stay tuned for updates on this over the coming year.

We've put together an FAQ to address many of the other questions you've raised. Our member services team is also available for further questions.

What happens to Family Tree Maker at the end of next year?

We are committed to helping our users through this transition. Towards the end of 2016, we will assess our progress toward a smooth transition for our customers and review our support commitment at that time.

After January 1, 2017, features that require connectivity to Ancestry, such as TreeSync, uploading and downloading trees and media, and Web Search, may no longer be supported. Most Family Tree Maker features are designed to work offline, and should continue to function unless a change on your computer, such as an operating system update, causes the functionality to break.

Will features such as charts, reporting and publishing be made available on Ancestry?

We are continuously exploring new options to make the experience better for all users and currently we're looking into ways to bring desired features from Family Tree Maker into the online experience – such as report functionality or the ability to replace one instance of a change throughout your entire family tree.

Will third party providers be able to integrate with Ancestry family trees?

We are exploring possible relationships with other desktop software solutions that would make it possible for their products to integrate with Ancestry API. Stay tuned.

What happens to the family tree I've created using Family Tree Maker? Will it continue to be accessible?

You will continue to be able to access your data through the desktop software beyond Jan. 1, 2017, however over time there will be a gradual degradation of features. You can always export your tree and save it.

When will you stop selling Family Tree Maker software?

We will stop selling the desktop software on December 31, 2015, however we will continue to fully support Family Tree Maker at least one full year until January 1, 2017. Until January 1, 2017, you will be able to continue to use the product and its full functionality, as you do today.

Which versions of Family Tree Maker will Ancestry continue to support?

Ancestry will continue to support all versions of Family Tree Maker at their current functionality until January 1, 2017.

Will I be able to download my full tree?

You can continue to download trees as a GEDCOM file. Users can also download and save historical records and media attached to individuals in their family trees.

Is Ancestry looking to sell Family Tree Maker, as you did with MyCanvas?

Presently there are no plans to sell Family Tree Maker software.

End of post

My Comment

Family Tree Maker will continue to work exactly as it does now for all of 2016. This means there is no need for any panic or rush decisions. I think the original wording that *Family Tree Maker* will be 'retired' on 31 December 2015 was particularly ill chosen and misleading if you accept a definition of 'retirement' as stop working as in the employment sense. This caused a lot of angst and confusion.

What Ancestry meant and should have clearly stated was that *Family Tree Maker* would no longer be developed or sold after 31 December 2015. This I think would have avoided the panic. Ancestry has received over 10,000 comments, mostly negative to that first poorly worded announcement.

Further, *Family Tree Maker* will not stop working (repeat NOT stop working) after 1 January 2017. I have no idea what if any features will be downgraded, I guess that is a subject for additional information later this year, but it will still work. Microsoft XP is no longer supported or being developed, yet it still works, as at least 166 of GUM members will testify.

GUM will continue to support *Family Tree Maker* exactly as it does now.

It is disappointing reading the above second blog where the words 'Ancestry is exploring' or 'continuously exploring' etc. My understanding was that the decision was 'thoroughly examined' so I wonder why the lack of clarity now? If things were thoroughly considered what is there to be explored? I seriously doubt how much thought was really put into the decision or its aftermath other than the stop developing and selling decisions. Still, it is Ancestry's right to make any decisions they like and their customers have the right to respond accordingly. That is what is called private enterprise or the free market.

There have been numerous posts from sellers of competing genealogy software and special offers etc. Bit like the vultures and the crows circling. Whilst it is very easy to get most of your information out of *Family Tree Maker* via GEDCOM, some *Family Tree Maker* GEDCOM tags are not fully supported (not all GEDCOMs are created equal) and if you use Source Templates in *Family Tree Maker* they apparently won't transfer either.

Again, vendors claim that they are working on solutions and workarounds and again my advice is to **wait to see what develops**. To paraphrase an old public service maxim, 'often doing nothing is the right decision'. Those of you who admire 'Sir Humphrey' would be aware of 'in the fullness of time', 'when the time is right' etc.

One thing though that should be considered now is that if you are going to continue with *Family Tree Maker* and you don't use version 2014 (Windows) or version 3 (Mac) seriously consider updating to the current version.

This is important for a number of very good reasons.

The current versions, 2014 and 3 (Windows and Mac) work best with the current operating systems Windows 10 and El Capitan respectively. Older versions of *Family Tree Maker* written before the release of the latest operating systems do not operate as well. Even although you may not use the latest version of Windows or Mac, inevitably when you update your computer you will be using the latest operating systems and having the current version of *Family Tree Maker* is going to assist in transferring your family files.

The current *Family Tree Maker* versions support GEDCOM 5.5.1 and this is important in transferring media links in a GEDCOM which in turn will assist in relinking media if you make a change in genealogy program at some later date. I will have more to say about that in a later article.

The facts are that Ancestry.com **has stopped producing and selling *Family Tree Maker***! Already I am seeing people being unable to buy it around the world. GUM fortunately currently has stocks of all versions, so if you are going to stay with *Family Tree Maker* but have a version before 2014 or 3, then I would **strongly suggest** that you purchase the current version whilst stock is available. When it is gone, it is gone, and they are not going to make anymore.

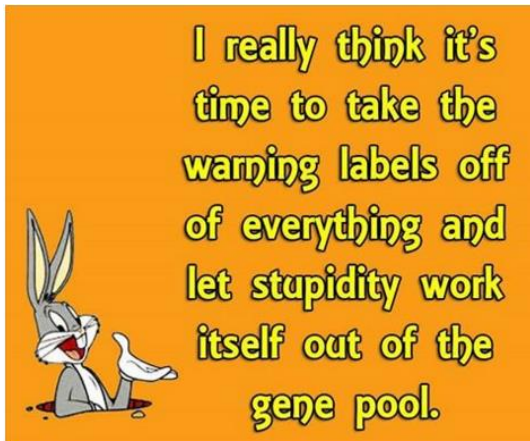
When TMG was 'retired' in 2014, GUM had desperate queries from all over the world for the final version as people with earlier versions left it too late to update their older versions and were disappointed.

GUM will continue to monitor the situation very carefully and will keep its members updated as Ancestry declares its intentions. As always, if you have any questions, email them to info@vicgum.asn.au for a prompt and informed reply.

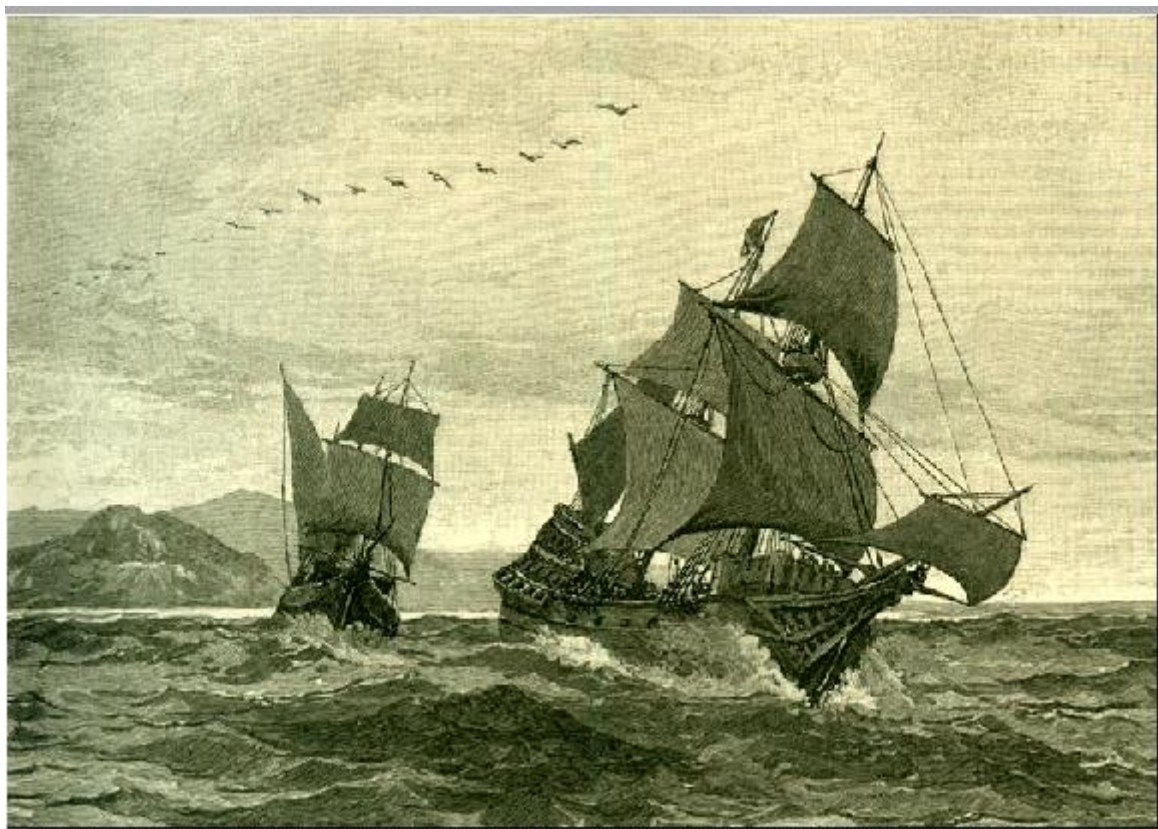
John Donaldson
VicGUM
www.vicgum.asn.au

First published in the February 2016 newsletter

Thoughts for the day -



Anyone for a nice sea voyage?



This is the means by which our founding fathers arrived
(and it wasn't always as smooth as this!)

AUSTRALIA

Victoria

Sale Cemetery

Australian Cemeteries - Victoria - Sale Cemetery

www.australiancemeteries.com/vic/wellington/sale.htm

Sale Cemetery Trust. Lisa Harrison. The Secretary PO Box 1418 Sale, Vic.

3850 Ph: (03) 5144 2262

This photo appeared recently on a Facebook page of the **High Country Heritage Group**.



THE WODONGA TO OMEO COACH SERVICE

In the 1880s and 1890s, a mail coach service ran twice a week over the Alps to Mitta Mitta, via Kiewa and Eskdale. It was operated by the Crawford and Co. firm, which offered various coach services in the Alps. From Mitta Mitta, a coach then ran through to Omeo. The photo shows the coach crossing the Snowy Creek at the foot of Mt Bogong, c1880

(SLV image. Accession no H83.137/1)

It would be interesting to know if Crawford and Co. is/was connected to the coachbuilding firm of Elz & Crawford of Bairnsdale whose ads appeared in the Advertiser in the early 1900s?

ELZ & CRAWFORD
(LATE WINTER & SON).
Coachbuilders, Wheelwrights,
and General Smiths,

BEG to inform the customers of the late firm and the public in general that, having taken over the business, they intend to conduct the same on the same lines as formerly. We have retained the same tradesmen, who, we are sure, have in the past given general satisfaction, and all orders entrusted to us will be carried out in a workmanlike manner, which they have proved by the work turned out during the last 12 months.

We trust the same patronage as was extended to the late firm will be continued and our endeavors will be to turn out any work entrusted to us in such a manner as to still retain the confidence and good name that the business has hitherto maintained.

Pommy bloke fronts up to Australia house in London to get a visa to visit family over here.

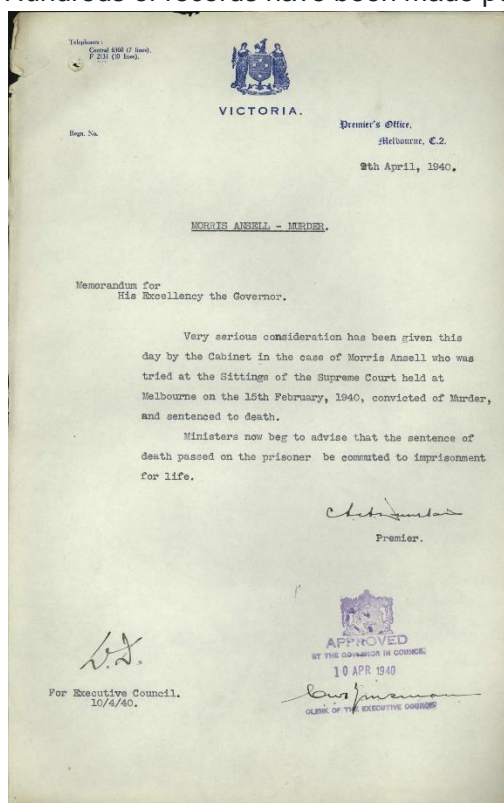
Bloke behind the counter asks "do you have a criminal record ?"

Pommy bloke sighs and replies " is that **STILL** a requirement..... "

From the PROV –

Personal Victorian histories revealed in newly opened archives

Hundreds of records have been made public for the first time



As of the 1st of January, hundreds of records relating to Victoria's history have been made public as part of our annual opening of officially closed records.

These records will be of particular interest to those of you waiting on files that mention members of your family tree.

Under Section 9 of the Public Records Act 1973 files of a personal or private nature are closed for up to 99 years to prevent the violation of personal privacy.

Included in this year's openings is the capital case file of murderer Morris Ansell whose death sentence was commuted to life imprisonment on the 10th of April 1940.

The Head Nurse's Daily Report Book from Kew Mental Hospital's Female Wards is also an interesting record detailing activities within the mental hospital from the year 1940.

[View the full list of newly opened files here...](#)

How to Digitise a Newspaper

For those who don't know how it's done, there is an interesting illustrated article on how the State Library digitises hard copy old newspapers at - <http://blogs.slv.vic.gov.au/our-stories/digitising-newspapers/>

Historic **mental hospital records** from the State of Victoria have been put on line by FindMyPast. The collection covers 11 institutions. Admission records span the years from 1811 to 1919 and discharge records span the years from 1838 to 1914. Although details vary by institution, a typical record lists name, date of admission, age, date of discharge, method of discharge and hospital. Some records are much more complete and include medical histories. These records can be searched by first name, last name, year and hospital name.

Mental health hospital records are an excellent source to search for genealogists looking for ancestors who appear to have dropped off the face of the earth. Sometimes, they ended up in mental hospitals. Access to the collection is by subscription. [[Historic Victoria State Mental Health Records](#)]

Genealogy website *Gould Genealogy* has published a useful list of all the historic newspapers that are expected to be digitized and put into the Trove system over the next six months. A very useful list if you want to get a head start on your planning for 2016. [[Gould Genealogy](#)]

Regular subscribers to the **Rootsweb Goldfields mailing list** may recall that Bendigo Regional Archives Centre (BRAC) launched our online "Petitions of the People" project back in 2012. I thought old and new subscribers might all be interested to know that a further 3,263 Names and Addresses (and sometimes occupations) were recently added to this online Digitisation project. This means there are now searchable details for just over 14,000 local individuals, who bothered to sign 284 Petitions presented to the former City of Sandhurst (Bendigo after 1891) between 1870-1899.

These documents cover 23 different types of issues, from Baths to Infrastructure, Lighting to Women... So, if you have Ancestors who lived in Bendigo and district during those three decades, please have a look using this

link http://www.brac.vic.gov.au/Digital_Records/Petitions_1870-1899

See whether any of your Ancestors' details (males and females signed Petitions) appear in any of these mini time capsule documents. You can read the typed versions of the relevant Petition's Prayer/s to see what issues were important enough to make your Ancestors put pen to paper, then look at the digitised version of your Ancestors' personal details, handwritten by them at the time the Petition was circulated.

Please check our website regularly. We will be adding more names and Petitions throughout 2016. I estimate that the final database will contain over 35,000 Names and addresses. A wonderful source for Family Historians.

Website: www.brac.vic.gov.au

Email: brac@ncgrl.vic.gov.au

The **State Library of Victoria** has begun to make publicly available a massive archive of **historical photographs** relating to Melbourne, its suburbs and country towns from the 1970s, most of which have never been seen before.

For 40 years the library has had 2000 rolls of film sitting in storage, which contain up to 70,000 photographs of Melbourne streetscapes and historical country towns.

This came about thanks to a project back in 1972, where volunteers sought to visually record the architectural history of Melbourne, its Suburbs and country areas. On average each place or suburb had about 800 photos taken. Houses, businesses, streets, the cars, the fashion and style of the era ... they're all captured on these photographs.

The State Library of Victoria is now digitising these photos and making them available online on their website. You can find some photos of Fitzroy and Castlemaine online already, and their aim is to digitise photos of South Melbourne and Albert Park soon.

State Library of Victoria's Community Engagement Director, Peter McMahon said

"Seeing what's actually been captured particularly in areas of vast redevelopments is going to be fascinating – we are really looking forward to seeing what's in there. We won't know what we've got in those other suburbs until we start unrolling the film and having a look".

Preparation for each suburb takes about two months, with the entire project expected to take several years.

As with so many projects, it is reliant on funding, and without further funds this project may come to a standstill. The SLV is hoping that local councils can sponsor the work needed to make its photos available.

Tasmania

A query posted on the Rootsweb mailing list for South Australia –

“What is the best site to view Tasmanian records please?”

Answer received –

“LINC Tasmania (State Library) is a good starting point;

<http://www.linc.tas.gov.au/Pages/Home.aspx> and in particular the family history page;

<http://www.linc.tas.gov.au/family-history/Pages/default.aspx>

the Tasmanian Names Index is a useful link, and register pages for pre 1900 births, deaths and marriages are linked to the relevant results.

The Tasmanian mailing list is also a helpful starting point -

AUS-Tasmania Mailing List Website <http://www.rootsweb.com/~austashs/>

Contact AdminAUS-Tasmania-Admin@rootsweb.com

Search the Archive -

<http://archiver.rootsweb.ancestry.com/cgi-bin/search?path=AUS-Tasmania>”

South Australia

Almanacs and Directories – South Australia

<http://guides.slsa.sa.gov.au/content.php?pid=366485&sid=3000163>

From the Rootsweb list for South Australia

ABC web news had this posting

<http://www.abc.net.au/news/2016-01-01/victorian-section-9-archives-opened-for-2016/7031026>

which stated that those records give glimpse of WWII-era justice - Three large bound volumes containing the criminal records of released Victorian prisoners have also been opened. . . files were originally sent to South Australia so that police there had a record of any former inmates who may have moved across the border.

The government files, kept in climate-controlled conditions by Public Record Office Victoria (PROV), have been closed until now under Section 9 of the Public Records Act 1973, which requires "personal or private" records to be withheld from public view for a period of time. . . . is among thousands of World War II-era files opened to the public today by the Victorian archives.

Their web site is <http://prov.vic.gov.au/>

Western Australia

An old ledger in the State Library of WA has been transcribed which is a list of residents of Albany in 1876. <http://bit.ly/1mbnLUW>

The transcription of the whole ledger is not complete yet. There are some sections not done, ie 1881 section and dog licences, but the 1876 list is.

The State Library of Western Australia has just completed digitizing a series of local almanacs spanning the years from 1849 to 1889. These almanacs list local government officials and local businessmen (either through ads or directory listings). They also provide a wealth of local information. You can read more about this new collection in the official blog of the State Library of Western Australia. Access is free. [[Historical Almanacs of Western Australia](#)]

There are 2 kinds of people in this world:

- 1) morning people
- 2) people who want to shoot morning people

New South Wales

FamilySearch.org has indexed an additional 326,000 records from the **1891 New South Wales census**. This census lists the head of household, street address, and the number of male and female members of the household. There is also a separate column listing the “Number of Chinese and Aborigines” in the household. The collection can be searched by first name and last name. Access is free. <https://familysearch.org/search/collection/2317858> . The 1891 New South Wales census provides basic information on each household. Source: FamilySearch.org Australia

UK website TheGenealogist has put online over 190,000 **ship passenger records from England and Ireland to New South Wales**. These passenger records span the years from 1828 to 1896. In addition to the usual information found in ship passenger records (name, port and date of departure, port and date of arrival, etc.), some of these new records also list additional information such as the passenger’s occupation, name of employer and salary. TheGenealogist now maintains fairly extensive emigration databases from the UK to various colonies and they continue to expand their capabilities in this area. The records can be searched by first name, last name and year. Access is by subscription. <http://www.thegenealogist.co.uk/>

Miscellaneous & Gumnet Mailing List items, including FTM

Immigration arrivals by air.

Robbo was recently asked by a high ranking ☺ **EGFHG** official (no names – but intimately associated with sausage sizzles!) the following –

“While there are numerous sea travel records and databases available, what, if anything, is available for air travel?”

Not knowing the answer himself, he posted that query on the Gumnet mailing list and the following answer emerged –

“Hi tworobbos,

Immigration records include arrivals by plane as well as ship - each is a “vessel”. These may be available online as a passenger arrivals index, or you may need to contact the relevant archives for details. Further details are available on the National Archives of Australia website at:

<http://www.naa.gov.au/collection/fact-sheets/fs227.aspx>

regards

Charlotte

Knowing this may help other members of the group – or, at least, those who read the Bulletin!

New Genealogy Program

A recent posting on Gumnet –

“A new genealogy software program called "rootstrust" will be officially released next month. The program has been in beta during 2015. Here's the links if you would like to have a look:

<http://blog.eogn.com/2016/01/06/announcement-rootstrust-1-0-to-be-launched-february-2016/>

<http://www.rootstrust.com/>

Windows 10 and USB devices

Gumnet query –

“I cannot find the **icon to remove a USB safely** since I downloaded Windows 10. Cortana cannot help me so I hope a real person in VicGum can. Maybe the icon does not exist in Windows 10??

If it should be there, then how do add it to my task bar?”

Reply –

1. “Since Windows 8, there has been no need to “remove a USB device safely” by the method you mention. As long as there is no activity on the device, you can just unplug it.”
2. “The icon is on the bottom right corner of the screen. Look for the ^ symbol and click it and “show hidden icons”. Select the one you want.”

Another query on Gumnet –

“Is there a way of colour coding the different generations in a fan chart?”

Answer from John Donaldson –

“I assume FTM?”

Create to fan chart and adjust for number of generations, items to include etc.

Right click on someone in the first generation you want to colour.

In the menu that appears select generation.

Now, right click on one of the persons in the generation line you selected.

Now mark the generation say marking one.

Repeat for other generations.

Now with the generations lines marked marking 1, 2 and 3 etc.

Go to the Box and line styles menu item in the RH edition panel.

In the boxes tab selected marked box 1.

Now you can alter the border and fill colours to what you want.

Repeat for the other generations.

Don't forget to save the chart.

This works for all charts in FTM not just the fan chart”

*Incidentally, the program **Charting Companion** makes the best fan chart that I have ever seen.*



Query –

My query is in regards to Exporting a Branch in FTM. I am wanting to export a branch of my tree to a separate tree - when I use the Export Branch Wizard, does it delete that branch from the main tree OR export a copy?

Also, for instance, if I clicked on myself, would the export branch go back or forward from me?

John Donaldson reply –

Exports a COPY (always)

Both you get all your ancestors and descendants

Note:

The alternative File>Export>Selected Individuals (which opens the Filter) in fact gives you more export options.

From the VicGUM mailing list

G'day all,

Happy New Year.

As usual, the New Year brings another year of online index updates. So time to do a review of your records, to see if you can fill in any gaps in your research, and add some more twigs to your lateral branches.

NSW:

Births to end of 1915,

Deaths to end of 1985,

Marriages to end of 1965:

<https://familyhistory.bdm.nsw.gov.au/lifelink/familyhistory/search?1>

Queensland Births to end of 1916:

<https://www.bdm.qld.gov.au/IndexSearch/queryEntry.m?type=births>

Queensland Deaths to end of 1986:

<https://www.bdm.qld.gov.au/IndexSearch/queryEntry.m?type=deaths>

Queensland Marriages to end of 1941 (75 years):

<https://www.bdm.qld.gov.au/IndexSearch/queryEntry.m?type=marriages>

Victorian Indexes:

Not sure if these have been extended. See:

<http://www.bdm.vic.gov.au/home/family+history/search+your+family+history/>

Dick Eastman

I have previously mentioned and recommended Dick's regular newsletter and now do so again. Items in this, and previous editions of the Bulletin have used articles from his newsletters. There are two versions – free and paid. While much of his daily free editions is oriented towards America, there are frequent articles of more general interest. Subscriptions can be arranged at:

<http://www.feedblitz.com/f/f.fbz?Sub=48932>

ENGLAND

Norfolk – TheGenealogist has released over 3.6 million parish records from Norfolk County. These are baptisms, banns, marriages and burial records that cover many of the parishes in Norfolk. This is the first part of a two-part release of Norfolk parish records as part of TheGenealogist's agreement with the Norfolk Record Office. The link provides access to the complete list of parishes and dates that are covered by this release. Access is by subscription. [Norfolk Parish Records](#)

Suffolk

The Suffolk Baptism Index covers over 350 Suffolk parishes and contains over 747,000 records from across the East Anglian County. The Index was created by the Suffolk Family History Society and is comprised of transcripts of original parish registers. The amount of information found in each transcript may vary depending on the age of the record and how much information was recorded although most will include your ancestors name, baptism date, baptism place, the names of their parents, father's occupation and any additional notes.

Suffolk

Lambert's Family Almanac 1858-1917 consists of over 3,000 pages recording local events in the market town Framlingham. The Almanac was started in 1856 by Robert J P Lambert as a record of life in his home town. The title page describes the book as, 'containing general and interesting information, including the rising and setting of the sun and moon, a copious calendar, law and university terms, eclipses, etc. with plenty of fire-side reading'. For a family historian, it contains so much more: births, marriages, obituaries, descriptions of the town and noteworthy events, trade directories and lists of officials. At its height of popularity, the almanac had become a household name with a circulation of up to 10,000.

Plymouth & West Devon

FindMyPast has released a collection of Plymouth and West Devon electoral registers. These registers span the years from 1780 to 1983 and consist of parish and parliamentary electoral rolls, electoral registers and lists of county voters and have been digitized in partnership with the Plymouth and West Devon Record Office.

A typical record lists the name, year, electoral event and place of the election. Some records even record who your ancestor voted for. Please see our article [Searching Electoral Rolls for Ancestors](#) to

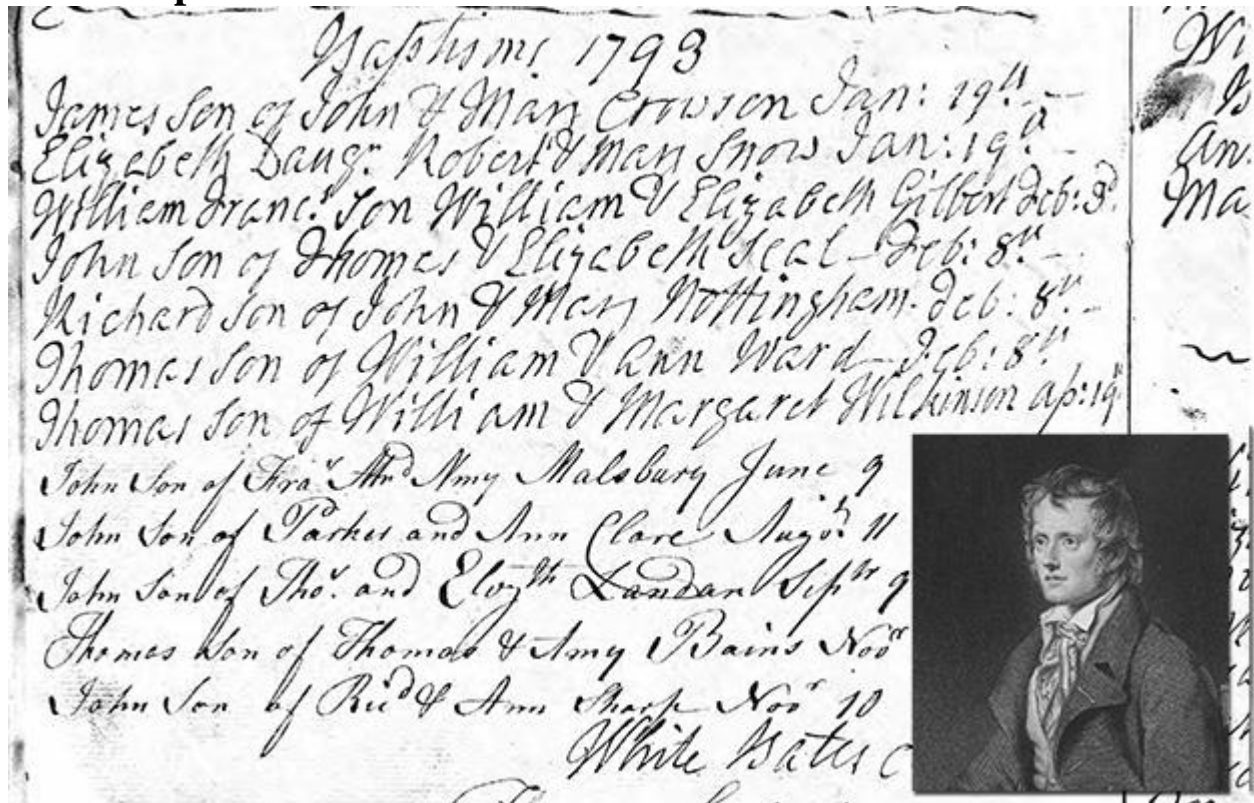
get the most out of this collection. Access is by subscription. [Historic Plymouth and Devon Electoral Rolls](#)

Plymouth Plague Rate 1627-1629

Plymouth Plague Rate 1627-1629 is an index of over 600 residents of the city of Plymouth who were taxed to fund the relief of an outbreak of Bubonic Plague. The Bubonic Plague, also known as 'The Black Death', first appeared in Europe in 1347 and is estimated to have killed between 25 and 60% of the continents population. The fatal disease was carried by rodents and inflicted terrible symptoms including sores, swelling of the lymph glands, respiratory problems, fever and the vomiting of blood. There have been numerous outbreaks throughout history such as the one that hit the port city of Plymouth in 1627. The disease was most active in Venners ward and local authorities were unable to combat and control the spread.

The index covers three of the city's wards: Looe Street, Venners and Vintry, and list the names of those who were taxed in order to fund the cities relief. Each record contains a transcript of the original document that lists a resident's name, the date they were taxed, the ward they lived in and any additional notes. Additional notes may reveal whether your ancestor was widow, gentleman, not in town at the time, poor, if they refused to pay, fled the area or succumbed to the disease.

Northamptonshire



Northamptonshire poet John Clare was baptised in Helpston on 11 August 1793, the son of Parker and Ann Clare (Photo: Ancestry/Getty Images)

Over seven million Northamptonshire parish records have been added to [Ancestry](#). Fully searchable, the [website's latest collection](#) provides details of baptisms, confirmations, marriages and burials in the county as far back as the 16th century. Among the famous names included in the release is poet John Clare, who is shown to have been baptised in the village of Helpston – now part of Cambridgeshire – on 11 August 1793. The records were digitised in partnership with [Northamptonshire Record Office](#), where the original parish registers are held. Explore by clicking [here](#) (requires subscription).

Lincolnshire

The website Deceased Online has added more cemetery records from Lincolnshire. The new additions come from Grimsby's Scartho Road cemetery and crematorium and the Cleethorpes cemetery. In total, there are some 400,000 new records dating as far back as 1877. Burial registers from Grimsby tend to be very complete. They contain a considerable amount of information such as the exact location of the grave, date of death, date of burial, first and last name of the deceased, occupation, sex, home address, cause of death, name and address of the informant (often a relative) and the officiating minister.

As an added bonus, if the deceased person was a child or not working, under the occupation heading is listed the closest living relative.

With this latest addition, Deceased Online now has 11 cemeteries and two crematoria totalling nearly one million records from Lincolnshire County. The records can be search by first name, last name and year. Access is by subscription. [[Grimsby Burial Records](#)]

Nottinghamshire burials

Thousands of new Nottinghamshire burial records are available to search on [Deceased Online](#). The website has now digitised and uploaded the burial books for Nottingham General Cemetery (also known as Canning Circus), containing entries stretching back to the 1830s. As well as details such as name and date of burial, the earliest records also provide information about the deceased's trade and profession, plus the names of family members. Search [here](#) (subscriptions or credits required to view document scans).

Staffordshire

Findmypast has added over 537,000 new records including:

Staffordshire, Dioceses of Lichfield and Coventry Wills and Probate, 1521-1860

If your ancestor from Staffordshire left a will, you'll gain valuable insight from this record set. Some left revealing messages for their next of kin that will add to your family story.

Leicestershire

Baptisms contains over 2,000 transcripts of original parish baptism registers. The records cover four parishes; Breedon on the Hill, Long Whatton, Sileby and Walton on the Wolds, and span from 1683 up to 1769. [Deceased Online](#)

Transcripts will list your ancestor's name, the date of their baptism date and parish in which they were baptised. These baptisms are a great way to uncover previously undiscovered branches of your family tree and many records will also list you ancestors relation (whether they were someone's father, mother, sister, son etc.) as well as the names of their parents.

Burial records contain over 3,000 transcripts covering seven Leicestershire parishes; Breedon on the Hill, Cossington, Long Whatton, Prestwold, Quorndon, Walton on the Wolds and Wymeswold. The records span the years between 1752 and 1835 and will reveal where and when your ancestor was buried.

A number of records will also include your ancestor's relation, the full names of their parents and, in the case of female ancestors, the name of their husband.

Hampshire

The Hampshire, Portsmouth electoral rolls 1835-1873 contain over 198,000 transcripts covering six parishes of Portsmouth: All Saints, St George, St John, St Mary, St Paul and St Thomas. Electoral rolls were registered annually, which means that you may find multiple entries for your ancestor. The Portsmouth electoral roll wasn't published in 1836 and 1837, and those from 1866, 1870 and 1871

have not survived. The electoral registers are from six parishes of Portsmouth: All Saints, St George, St John, St Mary, St Paul and St Thomas.

The registers include the names of those who were eligible to vote in local and parliamentary elections. By using the keyword field you can search for your home address and discover who lived in your house before you. Or you can search a street name and discover the neighbours who lived alongside your ancestor.

Cornwall

Cornish Memory: A Digital Archive of Cornish Life

Dick Eastman

A photo, film and audio archive documenting Cornish life has been made available online. On Cornish Memory, you can find photos, watch films, and listen to the stories of Cornwall's rich history from Victorian times to the present day. The collection of more than 30,000 items, some dating back to 1850, have been donated by professional and amateur photographers.



The project, called Cornish Memory, received £225,000 from the Heritage Lottery Fund which was used to create the website and digitise the media. Organisers plan to add thousands more images over the coming months.

I rather enjoyed listening to some of the audio recordings, especially a conversation with Charlie Burns who joined the Naval Wing of the Royal Flying Corp in 1914. He describes his participation in the First World War and the aircraft that he flew without any parachutes on board. That conversation can be heard

Tall masted ships in Charlestown harbour.

at http://cornishmemory.com/item/GUN_CD_025.

Cornish Memory is available at <http://cornishmemory.com>.

London

Honor Oak Crematorium records now on Deceased Online

Honor Oak Crematorium and its beautiful gardens were established in 1939, adjacent to Camberwell New Cemetery, and was opened by Lord Horder. The crematorium was designed by architects William Bell and Maurice Webb; whose father, Sir Aston Webb, owned the company which designed Camberwell New Cemetery.



The records for Honor Oak (pictured) include digital scans of registers; the earlier of which feature an excellent range of detailed information (see sample below) including full names and addresses of both the deceased and the applicant, ages, occupations, and location of ashes. With the addition of all 150,000 names and records for Honor Oak Crematorium, [Deceased Online](#) now has over 1.5 million records for nearly 600,000 burial and cremations for the [South London](#)

[Borough of Southwark](#) available through the website.

No.	Date of Cremation	Name, Address and Occupation of Deceased	Age and Sex	Religion	Date of Birth	Name and address of person who applied for Cremation	Name and address of person applying for licence	Name and address of person who acted as Registrar	Name and address of person who acted as Undertaker	No. of other cremations performed	Remarks
2083	12/10/1911	Alfred Smith 120 Lambwood Road Lewisham S.E. 13	55 M	Roman Catholic	18/10/1856	Stanley Smith 120 Lambwood Road Lewisham S.E. 13	J. Selwyn 24 B 15 Middle Road S.E. 1 St. August 24 B 24 B 24 B The Group Lewisham S.E. 13	London St. August Lewisham	James by Lewisham		2083
2084	13/10/1911	Annelle Jane Alghriston 33 Bellham Road Camberwell S.E. 5	41 F	Unmarried	18/10/1870	Miss Alghriston United States Club 24 Bellham Road S.E. 5	John Walter Ashme but Regaly former for the Crematorium London United	Camberwell Lewisham	Lewisham Camberwell	1	2084
2085	15/10/1911	Stanley Leonard Bellack 47 Albany Road Lewisham S.E. 13	62 M	Roman Catholic	18/10/1849	London Bellack 2 Albany Road Lewisham S.E. 13	James Lane 25 24 B 8 New Road Lewisham S.E. 13	London Lewisham	Lewisham Lewisham	1	2085

The three cemeteries managed by London Borough of Southwark – Camberwell Old, Camberwell New and Nunhead – have all records, dating back to 1840, on [Deceased Online](#) complete with register scans, grave details and cemetery grave section maps.

Notable cremations here include **Dr. Harold Arundel Moody**, who founded the League of Coloured Peoples in 1931. This was a British civil rights organisation that campaigned to eliminate the “colour bar” in Britain, where thousands of people were restricted socially and economically by their race. It was also active against such issues as the persecution of the Jews in Germany.

The much loved “Father Potter of Peckham”, **Reverend Canon George Potter**, was cremated at Honor Oak after his death in 1960. The Reverend Canon Potter battled against the horrendous poverty in his Parish and went on to found the Brotherhood of the Holy Cross, a religious order for the betterment of impoverished boys, and started a hostel in Nunhead to take in and reform boys who had committed crimes. Potter, driven by rats from his church hall, set up in the empty Eagle pub in Bells Garden Road and remained there for two years, until he and his congregation moved on.

Other South London Borough Council records on Deceased Online: [Royal Borough of Greenwich](#), [Lewisham](#), [Merton](#) and [Sutton](#).

England & UK Miscellaneous

The National Archives uploads WW1 hospital diaries

[The National Archives](#) has boosted its online collections with the addition of 247 downloadable First World War hospital diaries to its [Discovery service](#). Released in December to mark Disability History Month, the documents offer an insight into the daily treatment of wounded troops, including those suffering from mental as well as physical impairments. Several diaries also cover veterinary hospitals, which were used to treat horses and mules injured in combat. Find out more and explore the diaries [here](#) (document downloads cost £3.30 each).

The Tithe Maps Project for England and Wales Completed

Dick Eastman

The following announcement was written by the folks at [TheGenealogist.co.uk](#). Click on any of the images to view a larger version:

[TheGenealogist.co.uk](#) has now completed the launch of searchable Tithe Maps and Schedules for England and Wales with the release of more maps covering 40 counties. This means you can now view a map of your ancestors parish for the counties of Anglesey, Bedfordshire, Berkshire, Brecknockshire, Buckinghamshire, Caernarfonshire, Cambridgeshire, Cardiganshire, Carmarthenshire, Cheshire, Cornwall, County Durham, Cumberland, Denbighshire, Derbyshire, Devon, Dorset, Essex, Flintshire, Glamorgan, Glamorganshire, Gloucestershire, Hampshire,

Herefordshire, Hertfordshire, Huntingdonshire, Kent, Lancashire, Leicestershire, Lincolnshire, Merionethshire, Middlesex, Monmouthshire, Montgomeryshire, Norfolk, Northamptonshire, Northumberland, Nottinghamshire, Oxfordshire, Pembrokeshire, Radnorshire, Rutland, Shropshire, Somerset, Staffordshire, Suffolk, Surrey, Sussex, Warwickshire, Westmorland, Wiltshire, Worcestershire, York City and Ainsty and Yorkshire.

These maps link to the searchable schedules which contain over 14 million records. The schedules contain detailed information on land use with linked maps that jump to the plot for an individual from the records. The maps can contain hundreds of individual plots with varying levels of detail. They can reveal buildings, fields, houses, rivers, lakes, woods and also cover villages, towns and cities.

The next stage of this project is already underway and is to digitise the many colour tithe maps held by the TNA and partner Archives. These will link to the same schedules in a similar manner.

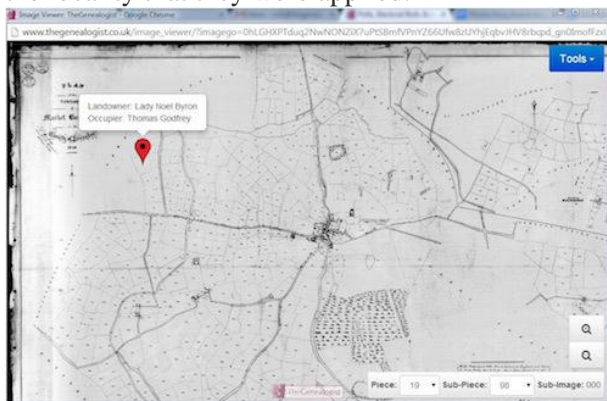
Let us look for the Leicestershire landowner Lady Noel Byron, the former wife of the poet Lord Byron. We find that she has large holdings in the county at the time of the survey.

We are then able to look at one of the holdings to see the record for some land occupied by Thomas Godfrey. We can see the tithe apportionment with only a single click and this image of the page reveals the amount of rent payable, in this case, to the Rector alone.

SCHEDULES	RECIPIENTS	NAME AND DESCRIPTION LAND AND PREMISES	STATE CULTIVATION	SCHEDULED TITHABLE QUANTITY	REMARKS
Byron-Lady's tithe	Thomas Godfrey	1/2 Great Close	Arable	7 1/2 1/4	
	do do	1/2 do	Pasture	4 1/2 1/4	
	Thomas Godfrey	1/2 do	Arable	4 1/2 1/4	
	do do	1/2 Great Close	do	4 1/2 1/4	
		1/2 do	Arable	5 1/2 1/4	
		1/2 do	do	5 1/2 1/4	
	William Jackson	1/2 Gardens		1 1/2 1/4	
	William Brambling	1/2 do	do	1 1/2 1/4	
	and others	1/2 do	do	1 1/2 1/4	
	Henry Stollen	1/2 do	do	1 1/2 1/4	
	John Rowland Esq	1/2 do	do	1 1/2 1/4	
	and others	1/2 do	do	1 1/2 1/4	
	Alfred Baker and	1/2 do	do	1 1/2 1/4	
	others	1/2 do	do	1 1/2 1/4	
	John Rowland and	1/2 do	do	1 1/2 1/4	
	others	1/2 do	do	1 1/2 1/4	

Lady Byron & Thomas Godfrey in the Tithe Records at TheGenealogist

The apportionment gives us the measurement in acres, roods and perches and the value of the tithe payable to the Rector. Frustratingly, the size of these units of measurement could vary according to the locality that they were applied.



Tithe Maps at TheGenealogist

These records are available as part of the Diamond subscription on TheGenealogist.co.uk

The **UK National Archives** have come out with a very useful video on navigating the 1939 register, which we have talked about previously. It is worth watching.

[1939 Register Instructional Video](#)

British Army Muster Rolls, 84th Foot, 1808-1818

The 1st and 2nd battalion of this regiment saw action in the Napoleonic Wars, facing guerrilla warfare in the Iberian Peninsula and deadly disease in the Netherlands.

British Army Muster Rolls, 60th Foot, 1879-1882

This regiment fought in the Zulu War, 1st Boer War and in Egypt during this time period. Their stories tell the unique experience of warfare in late 19th century Africa.

British Newspapers

Over 3.4 million fully searchable new articles 8 brand new titles have been added to our collection of historic British Newspapers. The last titles to be added to the collection include The Kentish Mercury, The People, West Somerset Free Press, Illustrated Berwick Journal and the Glasgow Constitutional. Substantial updates have also been made to 47 existing titles including over a million new articles added to Sheffield Independent and over 240,000 to both London Daily News and Manchester Evening News.

SCOTLAND

Scotland - Tiree



Fàilte oirbh! Welcome to An Iodhlann, the historical centre on the island of Tiree. An Iodhlann, pronounced 'an-ee-lun', is Gaelic for the stackyard where the harvest is stored.



Tiree, the outermost of the Inner Hebrides off the west coast of Scotland, is an island of dazzling beaches, flower-strewn meadows, exuberant wildlife and a powerful history. Since 1995 we have been collecting material about Tiree – old letters, emigrant lists, maps, reports, photographs, stories and songs. Stretching from the 3,000 million year old Lewisian gneiss which provides the bedrock of the island to last week's cattle sale prices, we now cover almost everything about the island, its people and the wider diaspora in our 12,000 item collection. If you want more information about anything you see or hear on this site, or if you have new information for us, don't hesitate to [get in touch](#).
<http://www.aniodhlann.org.uk/>

The latest images of **Scottish births, marriages and deaths** are available from 1 January. This year they consist of births registered in 1915, marriages in 1940, and deaths in 1965. The 1940 marriages are very significant because that year saw the introduction of civil marriages by registrars. Read some remarkable stories of 1940 marriages, including an [actor-soldier](#) who tied the knot soon after getting divorced, and a [navy pilot](#). Among the deaths registered in 1965 was that of [Anne Redpath](#).

[Search the New Year BMD Images](#)

IRELAND

From the Ulster Ancestry newsletter for January 2016

“Brethren let us depart. God has appointed for us a new country in which to dwell. It is called New England.

Let us be free of these Pharaohs, these rackers of rent, these screwers of tithes.

Let us depart and go unto the promised land, the land of Canaan.

For we are the Lords ain people and he will divide the seas before us.”

(Rev Robert McGregor of Aghadowey County Londonderry)

Research in Northern Ireland

Message from Ulster Ancestry -

Research in Irish Genealogy is changing fast

In the past 10 years the nature of genealogical research in Ireland has changed beyond recognition with more records available online and greater access to local archives from a distance.

The research community is also becoming more skilled at unearthing nuggets of information about those seemingly elusive Irish ancestors.

Ulster Ancestry has responded to the change in its customer’s needs by increasing the range of research services on offer. In keeping with the economic climate our prices remain fixed, some even being reduced.

What we can offer you is

- A remote one-to-one personal consultation either by email or phone. This is still free
- Our on line Assessments are still free
- Initial Research Report from £70
- A more in-depth Research Report from £120
- Document Retrieval from £5 depending on size and content.

To order today visit us at www.ulsterancestry.com/research.html

Dublin Registers & Records

The Dublin Registers & Records consists of eight publications of parish records from the Church of Ireland dating from the early 1600s up to 1800. The records are comprised of over 2,500 PDF images that allow you to discover the baptism, marriage, and burial dates of your Dublin ancestors as well as the names of their parents and spouse. Occasionally, other details are recorded, such as father’s occupation or how a couple was married (either by banns or by licence). The eight indexed publications included in this set are searchable by name, year, title, publisher, image number and keyword. <http://www.findmypast.com.au/articles/world-records/full-list-of-the-irish-family-history-records/newspapers-directories-and-social-history/dublin-registers-and-records>

U.S.A.

North Carolina

FamilySearch.org has indexed some 28,000 records of North Carolina estate files. These are basically loose papers from the North Carolina Department of Archives and History. Many of the records appear to be related to the settlement of estates, including the provision for heirs and the distribution of land and property. These files were indexed by the North Carolina Genealogical Society. The records span the years from 1663 to 1979 and can be searched by first name, last name, place of probate and probate year. Access is free. [[North Carolina Estate Files](#)]

Alaska

FamilySearch.org has created a new collection of Alaska vital records. These are birth, marriage, death and divorce records that span the years from 1816 to 1959. About 57,000 records have been indexed and put online, with more expected to become available.

So far, most are marriage and death certificates from the 1900s. The records in this collection can be searched by first name and last name. This is the first time we have seen early Alaska vital records go online. Access is free. [Early Alaskan Vital Records](#)

WRITE PLAINLY WITH UNFADING INK. THIS IS A PERMANENT RECORD.

APPLICATIONS

UNITED STATES OF AMERICA,
Territory of Alaska,
I, Clarence Chipley Nichols being first duly sworn, on oath depose and say: I am the
MALE applicant for the issuance of a Marriage License to myself.

Subscribed and sworn to before me, this 2nd day of August, 1917
Newauyup Burton
United States Commissioner.

UNITED STATES OF AMERICA,
Territory of Alaska,
I, Eleanor Lucy Gale being first duly sworn, on oath depose and say: I am the
FEMALE applicant for the issuance of a Marriage License to myself.

Subscribed and sworn to before me, this 13th day of November, 1917 and August 2, 1917
Newauyup Burton
United States Commissioner.

Note: Eleanor Lucy Gale, not in person at time license issued. This took place at home subsequent to seeing license.

STATEMENT

UNITED STATES OF AMERICA,
Territory of Alaska,
I, Clarence Chipley Nichols and Eleanor Lucy Gale being first
duly sworn, each for himself and herself, and not one for the other, on oath depose and say:

<p style="text-align: center;">MALE APPLICANT</p> <p>Full Name? <u>Clarence Chipley Nichols</u></p> <p>Relationship to Female Applicant, if any? <u>None</u></p> <p>Nationality? <u>American</u></p> <p>Color? <u>White</u></p> <p>Residence? <u>Juneau, Alaska</u></p> <p>Occupation? <u>Librarian</u></p> <p>Are you a Minor? (Under the age of 21 years) <u>Over 21 years of age</u></p> <p>If you are a Minor, give the name and residence of your parents or guardian.</p> <p>How many times have you been married? <u>Twice</u></p> <p>How were your prior marriage or marriages dissolved? <u>By divorce, Butte Montana</u></p> <p>Do you know of any legal reason why this marriage should not be solemnized? <u>No</u></p>	<p style="text-align: center;">FEMALE APPLICANT</p> <p>Full Name? <u>Eleanor Lucy Gale</u></p> <p>Relationship to Male Applicant, if any? <u>None</u></p> <p>Nationality? <u>American</u></p> <p>Color? <u>White</u></p> <p>Residence? <u>Evansston, Ill.</u></p> <p>Occupation? <u>Nurse</u></p> <p>Are you a Minor? (Under the age of 18 years) <u>Over 18 years of age</u></p> <p>If you are a Minor, give the name and residence of your parents or guardian.</p> <p>How many times have you been married? <u>Never married before</u></p> <p>How were your prior marriage or marriages dissolved? <u>-</u></p> <p>Do you know of any legal reason why this marriage should not be solemnized? <u>No</u></p>
--------------------------------------------------------------------------------------------------------------------------------------------------------------------------------------------------------------------------------------------------------------------------------------------------------------------------------------------------------------------------------------------------------------------------------------------------------------------------------------------------------------------------------------------------------------------------------------------------------------------------------------------------------------------------------------------------------------------------------------------	-------------------------------------------------------------------------------------------------------------------------------------------------------------------------------------------------------------------------------------------------------------------------------------------------------------------------------------------------------------------------------------------------------------------------------------------------------------------------------------------------------------------------------------------------------------------------------------------------------------------------------------------------------------------------------------------------------------------------

Subscribed and sworn to before me, this 13 day of Nov, 1917
Newauyup Burton
United States Commissioner.

AFFIDAVIT OF CONSENT TO THE MARRIAGE OF A MINOR No. _____

I, Clarence Chipley Nichols for himself and Eleanor Lucy Gale being a girl under 21 years of age, depose and say that we are both personally and lawfully single.

This is an example of part of a marriage application from Juneau, Alaska in 1917. It asks an interesting question usually not found on most marriage applications: *How many times have you been married?* Browsing through the marriage applications, it seems that a large number of people had been married more than once. In the example above, the groom (who was 21 years old at the time) had already been married twice before. This is a great question for genealogists because it can lead to many different sources, especially since most people in Alaska at the time would have come from another state. *Image Source: FamilySearch.org*

New England

NEHGS Offers FREE Access to Important Databases on AmericanAncestors.org during the Month of January 2016

Dick Eastman

Family Historians Can Fulfill New Year Resolutions with a Variety of Resources in Genealogy Available from NEHGS

December 30, 2015—Boston, Massachusetts— To assist family historians of all levels with ambitious New Year's resolutions, New England Historic Genealogical Society (NEHGS) is granting free access from Wednesday, December 30, 2015, through Sunday, January 31, 2016, to historic vital records from Massachusetts, New Hampshire, and Vermont which will be available for unlimited access during the entire month after registering for a free account. NEHGS, the most respected name in family history, has also assembled a quick guide to resources, services, and staff expertise to fulfill any genealogist's resolutions to grow the ancestral family tree in the New Year.

Family historians can start fulfilling their New Year's genealogy resolutions with NEHGS by visiting AmericanAncestors.org/2016.

The vital records on AmericanAncestors.org is a collection of valuable information regarding births, marriages, and deaths and is an essential resource for researching ancestral connections. Databases available for unlimited access this entire month after registering for a free account include:

Massachusetts Vital Records, 1841-1910

From original records held by the Massachusetts Archives, these vital records cover the years 1841-1910. The vital records cover births, marriages, and deaths that occurred in Massachusetts and not only hold the records, but also indices to them. The information from the 1841-1910 Birth, Marriage & Death indices has been entered into a searchable database. Each index entry includes the person's first and last name, the town or city where the event occurred, the year, volume number, and page number. The database is searchable by first and last names, record type, year, and location.

New Hampshire Births to 1901, Deaths and Marriages to 1937

This database contains the records of births and marriages to 1901, and deaths and marriages to 1937, as filed with the state of New Hampshire. These records are currently held by the New Hampshire Division of Vital Records Administration. The collection includes more than 475,000 birth records, more than 1,000,000 marriage records, and more than 915,000 death records. Names of parents and spouses have also been indexed, when available. Town clerks were required to send copies of vital records to the state beginning in 1866, although participation was limited until the Bureau of Vital Records was established in 1905. The town clerks then extracted historical vital record information to update the files at the state level, although some records were never reported. The database is searchable by first and last names, record type, year, and location.

Vermont Births, Marriages and Deaths to 2008

This database contains the records of births, marriages and deaths to 2008, as filed with the state of Vermont. These records are currently held by the Vermont State Archives and Records Administration. The collection includes more than 1.5 million birth records, more than 1.8 million marriage records, and more than 1 million death records. Names of parents and spouses have also been indexed, when available. The records held in this collection refer to the statewide index of vital records maintained by the Vermont State Archives. Town clerks were required to send copies of vital records to the state beginning in 1857. The state government began creating a statewide index to these records in 1919. The database is searchable by first and last names, record type, year, and location.

Registration is required at AmericanAncestors.org as a **FREE Guest User** to gain access to these valuable resources. Guest User accounts allow web visitors to use a limited suite of AmericanAncestors.org databases and access web content such as making purchases from the online store. Unlimited access to more than 1 billion records and to other benefits is available through membership at NEHGS.

New York

New York Researcher Update

Three new issues have been added to the NYG&B Record, the second oldest genealogical journal in the United States. [Search](#) or [browse](#) to find valuable documentation to aid you in your family history research. Since 1870, the researcher has published compiled genealogies documented to the highest standards, transcriptions of original records and other source material from throughout New York State, works that solve genealogical problems, and reviews of important scholarship in the field.

U.S.A. miscellaneous

There were 18 new, free historic record collections added or updated this week at FamilySearch.org.

Highlights include –

[Connecticut District Court Naturalization Indexes 1851-992](#),

[United States GenealogyBank Obituaries 1980-2014](#),

[Massachusetts Revolutionary War Index Cards to Muster Rolls 1775-1783](#),

[North Carolina Estate Files 1663-1979](#),

American Bible Society

The American Bible Society's collection of family Bibles contains family records that are unavailable anywhere else. The collection is an index over 630 microfiched inscriptions left in family bibles that recorded details pertaining to life events such as births, marriages, and deaths. The Index was created by volunteers from the New York Biographical and Genealogical Society volunteers and contains over 8,000 names. The collection is available to [search](#) and [browse](#).

Each Bible contains a digitized a set of pages containing the ABS library record, the publisher and year of the Bible, the printed title page, and the handwritten pages where inscriptions and life events, including births, marriage and deaths, were recorded.

CANADA

War of 1812 in Canada database launches

A [free database](#) containing details of Canadian men and women who were involved in the War of 1812 has been launched on the web. Created using more than 45,000 references found in historic documents held by Library and Archives Canada, the resource can be searched by keyword, surname, given name, rank and unit. Although the conflict was fought between the United States and Great Britain, [many military events took place on Canadian soil](#). Search the database [here](#).

EUROPE

Germany

FamilySearch.org has created a new indexed collection of civil registration deaths from Frankfurt Germany. These are official death records spanning the years from 1928 to 1978 including the important period during World War II. The records come from the Hessian State Archives in Marburg. The records can be searched by first name and last name. In total, there are some 567,000 records in this collection. This will be an important collection for anyone with ancestors from Frankfurt. Access is free. [[Frankfurt Civil Death Records](#)]

Italy

Italy – FamilySearch.org has indexed an additional 252,000 civil registration records from the state archive in Udine. These records span the time period from 1806 to 1815 and 1871 to 1911. These are primarily birth, marriage and death records that can be searched by first name and last name. Access is free. [[Udine Vital Records](#)]

Other highlights include the [Italy Taranto Civil Registration \(State Archive\) 1809-1926](#).

Hungary

Couple discover Nazi documents hidden in home

A huge cache of documents created by the Nazis during the Second World War has been discovered hidden inside an apartment in Hungary. The haul, which includes more than 6,300 papers, was found inside a wall cavity while Budapest couple Gabor and Brigitte Berfeddy were undertaking repairs to their home. The documents form part of the 1944 Budapest census, which the Nazis used for planning the relocation of Jewish residents to ghettos in the city's seventh district. Read the full story [here](#).

LATIN AMERICA

Colombia

FamilySearch.org has added 1.4 million more indexed records from Colombia. These are Catholic Church records that span the years from 1576 to 2014. These records include primarily baptisms, confirmations, marriages and deaths. This is a very large collection consisting of some 12.6 million images. The records that have been indexed can be searched by first name and last name. Access is free. [[Historic Colombia Church Records](#)]

Brazil

Other highlights include the [Brazil Rio de Janeiro Immigration Cards 1900-1965](#),

SOUTHERN AFRICA

FamilySearch.org has created a new image collection of records from the registers of the South Africa Netherdutch Reformed Church that covers various areas of South Africa, Angola, Kenya, Namibia, Tanzania, Zambia and Zimbabwe. These records span the years from 1838 to 1991.

There are some 141,000 images in this collection and consist primarily of christenings, marriages and church membership records. The records are in both Afrikaans and English. Access is free. [[South Africa Church Records](#)] Here is a useful link to common [Afrikaans words found in genealogy records](#).

MISCELLANEOUS

Huge Free Collection of Digitized Books Now Available on MyHeritage

Dick Eastman

This is a huge release. MyHeritage has just released a collection of about 37,000 digital books, roughly 250 million pages, that are useful for genealogy research. The books are available as both images of the original pages plus as OCR (Optical Character Recognition) text. You can also print as many pages as you wish. Mac users and anyone using one of the later versions of Windows also can save them as PDF files by using PDF "printing" built into the operating system. MyHeritage will also automatically insert source citations directly into a person's record within your database on MyHeritage.

[Search Compilation of Published Sources now](#)

The new collection includes tens of thousands of digitized historical books, with actual images of the books' pages, and all their text extracted using Optical Character Recognition. The books span the last four centuries and include family, local and military histories, city and county directories, school and university yearbooks, church and congregational minutes and much more. A vast amount of rich data from diverse publications makes this collection a fantastic source of rare genealogical gems, providing insight into the lives of our ancestors and relatives.

We've added this collection using a new process that adds approximately over 37 million pages to [SuperSearch™](#) per year, utilizing a team of 40 curators. The curators examine each digitized book for relevance to family history research, and enhance its meta data if they decide to include it. The collection is sourced from various published texts that are copyright-free, and will be updated from now on several times each year.

The [Compilation of Published Sources](#) collection is located in SuperSearch™ under Books & Publications and is free to access. Easily search the collection by any of the following: first name, last name, publication title, publication date, publication place, or keywords.

Our unique and powerful [Record Matching technology](#) is now matching this new collection automatically to all family trees on MyHeritage, and users are alerted if Record Matches are found for individuals in their family tree. Correct matches can be confirmed and source citations can be extracted directly to your family tree, using the [extract information feature](#).

First Christmas Card Ever wondered what the first Christmas card looked like? Below is what is thought to be the first ever Christmas card from 1843. Today, people still send some 750 million Christmas cards each year. The first commercial Christmas cards began in the Victorian era (not

counting religious-themed prints that go back to the Middle Ages).



The idea of a specialty Christmas card began with John Callcott Horsley, who designed and sold 1,000 specially printed Xmas cards in London in 1843, as shown above. Notice in the image the engraver has snuck in a child drinking wine (in the middle, just above the coat of arms). - See more at:

http://www.genealogyintime.com/genealogy-news.html?awt_l=PW5bV&awt_m=J6_CihVfZwk.Vy#sthash.38DPe1ey.dpuf

Family Tree Maker

Dick Eastman

Following the recent announcement of the “retirement” of Family Tree Maker, many users of that program are planning to switch to a product made by a different producer. Of course, anytime you move data from one program to another, maintaining both the accuracy and the completeness of that data is critical. Keith Riggle has written the first of a multi-part article that addresses the problems and offers suggestions as to “how to do it right.” Keith writes:

“That’s the goal of this article: to help you identify areas where your FTM tree is non-GEDCOM compliant and start cleaning them up. Please note that this article is not about correcting factual errors in your tree.”

The rather lengthy article contains numerous screenshots showing how all this is done. I will suggest that all Family Tree maker users should read Keith’s article in the

Genealogy Tools Blog at <http://goo.gl/pJDh7G>.

There are articles for Legacy at -

<http://www.legacyfamilytree.com/FTM.asp>

and Family Historian at -

http://www.fhug.org.uk/wiki/doku.php?id=how_to:import_from_family_tree_maker

Finding Birth Records

From Graham Jaunay's "Proformat News" – December 2015, No. 118

If you are having trouble find a birth certificate in the index then read on...

When searching indexes ignore all but the first given name and surname. In fact, if using a database search engine avoid searching on any given name unless the family name is extremely common! The forename you think was your ancestor's may differ. People were known to change an unliked given name. Remember that some people were actually called Tom, Dick or Harry.

You may know the person by a middle name because the first name was common in the family. The fashion for more than one given name only became overwhelmingly popular in the latter part of the 19th century. At the beginning of the century several given names were quite rare. Your ancestor may have adopted another given name later in life.

If you cannot find the person under their expected surname, then check using the mother's family name. It is possible the parents were not married at the time of birth and then the records should be, but not always, under the mother's name. Whatever the case the name recorded will be the name disclosed. The clerk involved did not undertake any formal checks! If the parents were living together, the mother may have already adopted her partner's name for respectability. Often when fathers died and mothers remarried, the children took their step-father's name.

Often in the pursuit of ancestry we rely on the marriage certificate to determine the names of the couple's fathers. This could prove to be a problem if one of the couple did not know their father as a consequence of a marriage breakup or death when the child was very young. Often your ancestors felt obliged to tell the celebrant something and made guesses or just simply told an untruth. After all not many would have wanted to admit being illegitimate or may have never been given the truth by their mothers.

When it comes to more common names often the searcher is reliant on the birthplace of their ancestor. Many did not know where they were born and wrongly assume the place they lived when young was the birthplace and thus records completed by the person themselves may be incorrect and thus differ from that on the birth or baptism certificate. Records completed by parents are more likely to be correct.

In some jurisdictions the place recorded on the birth certificate may not be the place of birth but the place of residence! In South Australia both were acceptable for the purposes of the birth certificate and neither were sought until the very end of the 19th century. If you are using censuses to locate birth records, then not only does the place of birth become questionable but ages are often wrong or massaged to retain respectability. We see the same in marriage certificates when ages are adjusted up to 21 plus to avoid the need to secure parental permission or made to converge when there is a considerable gap between the ages of the couple. Certificates recording the ages as, *full age* need to be treated with suspicion. Often these are the very people who were not of *full age*! Some people just were not aware of their correct age. Using a death certificate can cause problems as much of the data is often little more than a guess, especially when the deceased had no relatives. Even birth certificates are often wrong when it comes to the birth date. Births not registered within the statutory time attracted a penalty. This could be avoided by adjusting the date of birth.

Sometimes births were not registered. You need to check when civil registration started and even that may not be an accurate guide. In South Australia civil registration started in mid-1842 but only covered two areas within the colony. Some parts of the colony had to wait more than ten years before their region was proclaimed a district. In the meantime, parents were expected but not required to travel to the nearest district. This could be several hundreds of miles away and so never happened!

In fact in the first almost 40 years of civil registration in England and Wales there was no compulsion to register. The onus was on the registrars and so many births were not registered. Many Catholics took advantage of this oversight as the birth of a child was considered by many to be none of the state's business and confined their notification to the Church in the form of a baptism.

Using military records to determine an approximate year of birth is fraught with issues and these ages were particularly rubbery!

Turning to pre-civil registration we may just have to accept we will never know the date of birth and may have to be satisfied with at best a baptism date. While most baptisms happened shortly after birth this is not the case with all Christian denominations. Ironically the parish priests and clerks who were including birth dates in baptism registers were discouraged from doing so with the introduction of ruled registers in England and Wales in 1813. Provision to provide the birth date was omitted as depicted in the following register for Banningham NFK.

